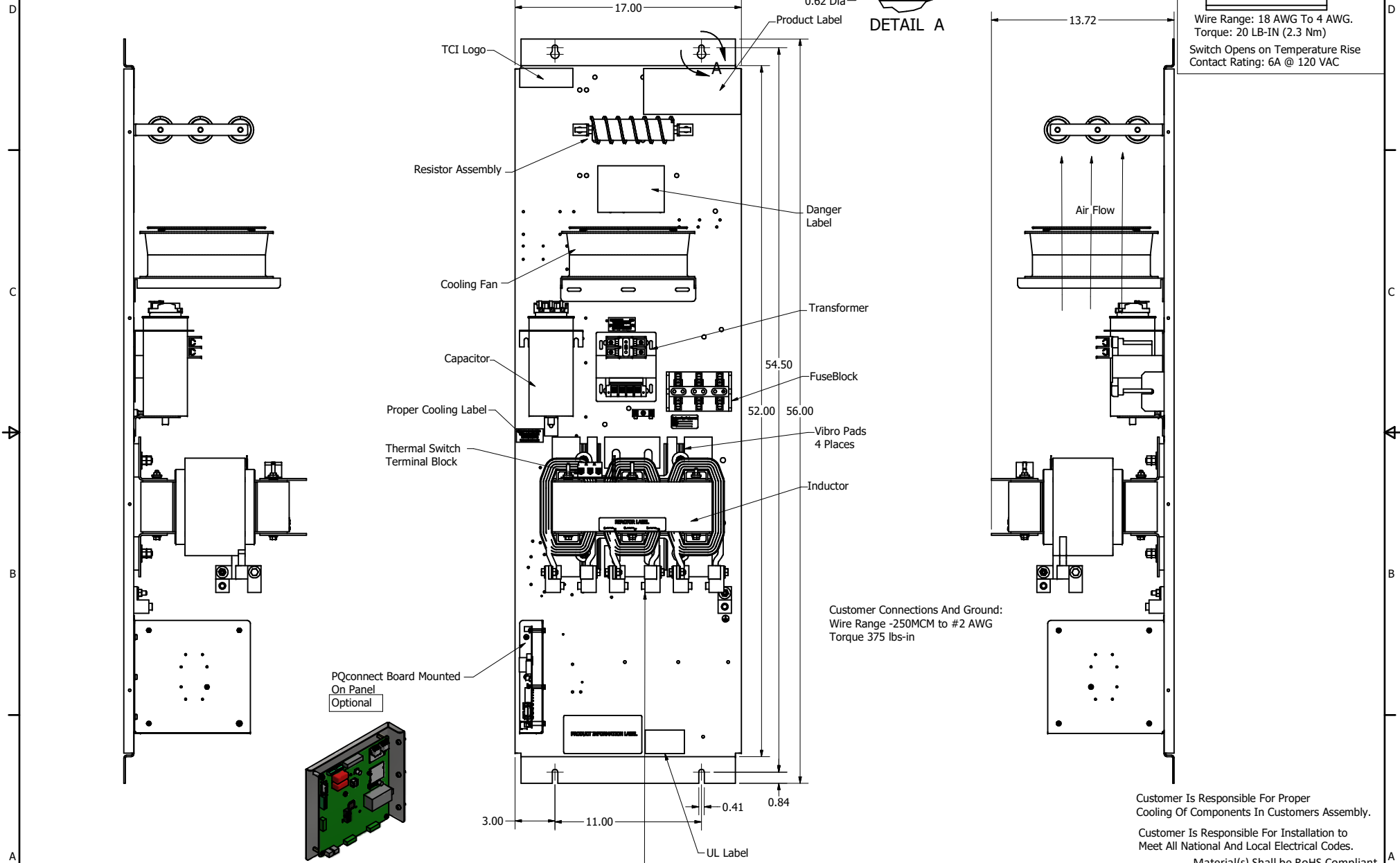
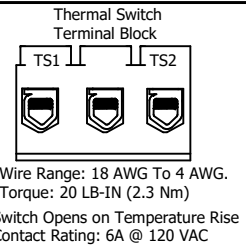
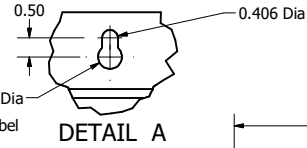


SineWave Part Number	Schematic Drawing#	Approx Weight (LBS)
KMG160A00A	24281-3A	250
KMG160A00P	24281-3P	255

HorsePower (HP)	kVar	Max Amps	Voltage (V)	HZ	Phase
125	10	160	480	60	3



Customer Connections And Ground:
Wire Range -250MCM to #2 AWG
Torque 375 lbs-in

Customer Is Responsible For Proper Cooling Of Components In Customers Assembly.

Customer Is Responsible For Installation to Meet All National And Local Electrical Codes.

Material(s) Shall be RoHS Compliant

Customer Connections
U V W
T1 T2 T3

TCI, LLC CLAIMS PROPRIETARY RIGHTS IN THE MATERIAL HEREIN DISCLOSED. IT IS SUPPLIED WITHOUT PREJUDICE TO ANY PATENT RIGHTS OF TCI AND MAY NOT BE REPRODUCED OR USED TO MANUFACTURE ANYTHING SHOWN THEREIN WITHOUT WRITTEN PERMISSION FROM TCI.					TOLERANCES (EXCEPT AS NOTED) DECIMAL .XX ± .25 .XXX ± .10	TCI W132 N10611 Grant Drive Germantown, WI 53022 KMG160A00-, SineWave Filter Open Panel, 125HP, 480V	
	B	Add PQconnect Board	9/2/2020	DSW	FRACTIONAL ± 1/16		DRN BY: DSW DATE: 10/07/2016 FILE: 104338DG
	NO	REVISION	DATE	BY	ANGULAR ± 1°		SCALE: 1/5 DRN BY: [] DATE: [] FILE: []
							SHEET 1 OF 1